

APS-BER

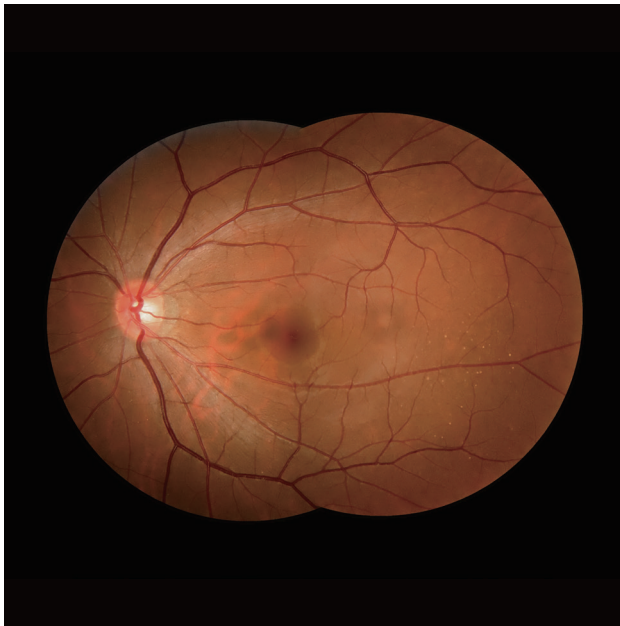
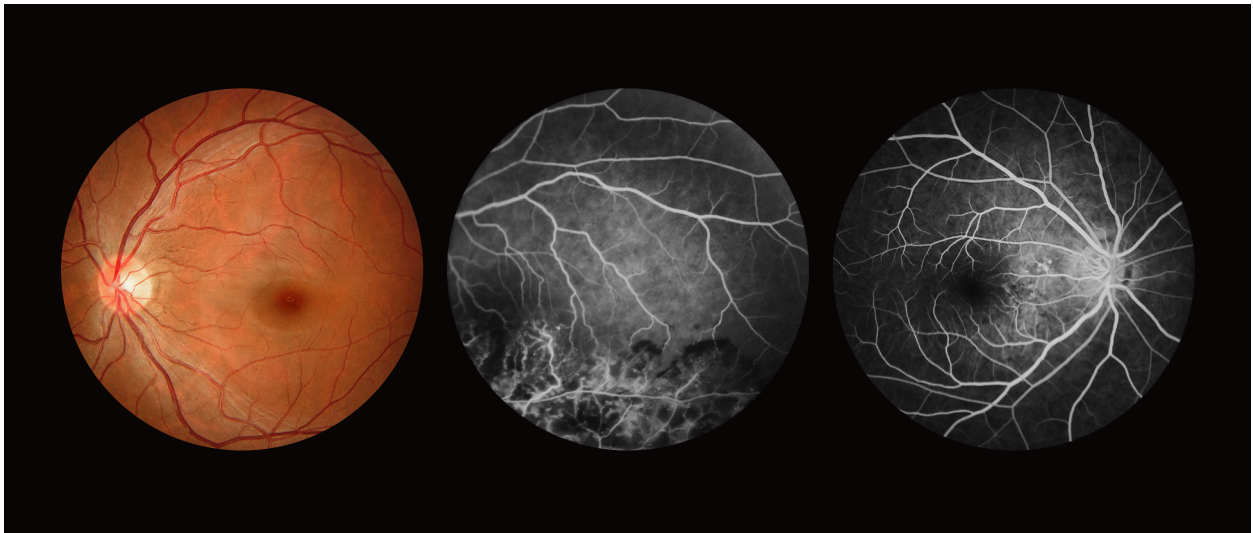
Fundus Camera & Fluorescein Angiography System

- Unique double dots alignment assistance
- Automatic focus&exposure
- Five internal fixation points



Product *Features*

- With fluorescein fundus angiography(FFA)
- Multi-point internal fixation lights
- Double dots alignment assistance
- Minimum pupil diameter for shooting in 3.3mm
- Automatic image optimization&stitching



Minimum pupil diameter for shooting in 3.3mm, and the audience is larger, which is suitable for the ophthalmological examination, physical examination and diabetic fundus screening.

The image can be processed, arbitrarily zooming, moving, pasting, splicing, measuring and calculating the area of the lesion, editing text and generate medical records&reports.

The fundus colorful images, the dynamic images and static flash of fluorescence angiography of the retina were treated in a digital manner.

Technical Specification

Camera resolution: 24.1 Mega Pixel

Field of view: Up to 53°

Non-mydratiac: Yes

Minimum pupil size: 3.3 mm

Alignment: Two Dots

Function: Color Fundus & FFA

Light source: Infrared LED

Diopter compensation: $\geq \pm 15D$

Focus Mode: Auto Focus & Manual Focus

Working distance: 42mm \pm 2mm